



**International Science Group**

**ISG-KONF.COM**

**XI**

**INTERNATIONAL SCIENTIFIC  
AND PRACTICAL CONFERENCE  
"INTEGRATION OF SCIENCE AS A MECHANISM OF  
EFFECTIVE DEVELOPMENT"**

**Helsinki, Finland**

**November 28 - December 01, 2023**

**ISBN 979-8-89238-623-4**

**DOI 10.46299/ISG.2023.2.11**

# **INTEGRATION OF SCIENCE AS A MECHANISM OF EFFECTIVE DEVELOPMENT**

Proceedings of the XI International Scientific and Practical Conference

Helsinki, Finland  
November 28 - December 01, 2023

## UDC 01.1

The 11th International scientific and practical conference “Integration of science as a mechanism of effective development” (November 28 - December 01, 2023) Helsinki, Finland. International Science Group. 2023. 475 p.

**ISBN – 979-8-89238-623-4**

**DOI – 10.46299/ISG.2023.2.11**

### EDITORIAL BOARD

<u>Pluzhnik Elena</u>	Professor of the Department of Criminal Law and Criminology Odessa State University of Internal Affairs Candidate of Law, Associate Professor
<u>Liudmyla Polyvana</u>	Department of Accounting and Auditing Kharkiv National Technical University of Agriculture named after Petr Vasilenko, Ukraine
<u>Mushenyk Iryna</u>	Candidate of Economic Sciences, Associate Professor of Mathematical Disciplines, Informatics and Modeling. Podolsk State Agrarian Technical University
<u>Prudka Liudmyla</u>	Odessa State University of Internal Affairs, Associate Professor of Criminology and Psychology Department
<u>Marchenko Dmytro</u>	PhD, Associate Professor, Lecturer, Deputy Dean on Academic Affairs Faculty of Engineering and Energy
<u>Harchenko Roman</u>	Candidate of Technical Sciences, specialty 05.22.20 - operation and repair of vehicles.
<u>Belei Svitlana</u>	Ph.D., Associate Professor, Department of Economics and Security of Enterprise
<u>Lidiya Parashchuk</u>	PhD in specialty 05.17.11 "Technology of refractory non-metallic materials"
<u>Levon Mariia</u>	Candidate of Medical Sciences, Associate Professor, Scientific direction - morphology of the human digestive system
<u>Hubal Halyna Mykolaivna</u>	Ph.D. in Physical and Mathematical Sciences, Associate Professor

## TABLE OF CONTENTS

ADVERTISING		
1.	Сушкова О.М. ЕВОЛЮЦІЯ ОБРАЗУ ЖІНКИ В РЕКЛАМІ	14
ARCHITECTURE, CONSTRUCTION		
2.	Задорожнікова І.В. БУДІВЕЛЬНІ МАТЕРІАЛИ ТА КОНСТРУКЦІЇ ДЛЯ ЗВЕДЕННЯ ЗАХИСНИХ СПОРУД	17
3.	Отношевна Л., Кульбашевський В. ВИДИ ВЕНТИЛЯЦІЇ, ЇХ ПРИЗНАЧЕННЯ І СКЛАД	20
ART HISTORY		
4.	Оспанова А.М., Аубакирова А.Г. ЖАҢАНДЫҚ АРТ- НАРЫҚ: БАҒЫТТАРЫ МЕН ПЕРСПЕКТИВАЛАРЫ	24
5.	Різаєва Г.Є. ПУЛЕНК – АПОЛЛІНЕР: ПІСНІ ВІЙНИ	29
BIOLOGY		
6.	Григор'єва В.С. ЗАКОНОМІРНОСТІ ВПЛИВУ МІКРО- І НАНОПЛАСТИКУ НА ФУНКЦІОНУВАННЯ НЕРВОВОЇ СИСТЕМИ ТВАРИН	32
ECONOMY		
7.	Bershadskyi A. РОЛЬ ТА ВПЛИВ ІНФОРМАЦІЙНИХ СИСТЕМ З АВТОМАТИЗАЦІЇ РОБОТИ З КЛІЄНТАМИ	36
8.	Mustafayev M.E. FUNDAMENTALS OF THE MODEL OF EMPLOYEE WELL-BEING IN THE CONDITIONS OF DIGITIZATION	45
9.	Єфремов А.О., Бойко Л.О. ІНТЕЛЕКТУАЛЬНИЙ КАПІТАЛ ТА ЙОГО ВПЛИВ НА КОНКУРЕНТОСПРОМОЖНІСТЬ ПІДПРИЄМСТВ	53

PSYCHOLOGY		
76.	Tarasenko A. FACTORS OF SOCIAL INTELLIGENCE OF FUTURE PROGRAMMERS	351
77.	Погребна А.В., Іващенко А.І. ТЕОРЕТИЧНІ АСПЕКТИ РОЗВИТКУ РЕЗИЛЬЄНТНОСТІ В УМОВАХ ВІЙСЬКОВОГО СТАНУ	355
78.	Ташматов В.А., Мішина О.С. ІМПРИТІНГ У ТВАРИН І ЛЮДЕЙ	358
79.	Ташматов В.А., Самара О.Є., Брусановська В.О. АГРЕСИВНА ПОВЕДІНКА СОБАКИ	360
80.	Ташматов В.А., Самара О.Є., Юзленко В.Є. ІНСТИНКТИВНА ПОВЕДІНКА	367
81.	Янушкевич Д.С. ЗВ'ЯЗОК ЗАГАЛЬНОЇ ЖИТТЄСТІЙКОСТІ З ВИБОРОМ ПСИХОТЕРАПІЇ ЯК ПРОФЕСІЙНОЇ ДІЯЛЬНОСТІ ЖІНКАМИ	370
SOCIOLOGY		
82.	Рябець О.М. СПІВВІДНОШЕННЯ НАУКОВОГО ТА ІДЕОЛОГІЧНОГО ЗНАННЯ	373
TECHNICAL SCIENCES		
83.	Ali-Shakh I., Shapovalova S. THE CLASSIFICATION OF FINANCIAL NEWS CONTENT USING MACHINE LEARNING	376
84.	Aliyev R., Kuznetsov V. INNOVATIVE APPROACHES: INTEGRATING WAVE AND TIDAL ENERGY WITH OFFSHORE OIL PLATFORMS	378
85.	Chornohlazova H., Ienina I., Mazhura V. MODERN METHODS FOR DIAGNOSIS OF AVIATION OILS IN AIRCRAFT ENGINE SYSTEMS	380

86.	Dudar T., Khvostivskyi M., Uniyat S. ALGORITHICAL AND SOFTWARE PROCESSING OF PCG-SIGNALS FOR DIAGNOSING STENOSIS OF THE AORTIC VALVE OF THE HEART	384
87.	Khrulev A. MATHEMATICAL MODELING OF REED VALVE OPERATION IN ENGINES WITH PERIODIC WORKFLOW	389
88.	Kuatbekova A., Zhalbagaeva K. ESTABLISHMENT OF HUMAN MEDICAL DATA AND FIRST AID INSTRUCTION IN THE DIGITAL BANKING APPLICATION AND ITS ACCESS TO EGOV	396
89.	Sai K., Petlovanyi M., Drahun D. RESOURCE POTENTIAL OF MODERN COAL MINES	398
90.	Vovk O., Biletskyi M. USING DEEP NEURAL NETWORKS TO CREATE MUSIC SEQUENCES BASED ON MIDI FILES	402
91.	Агура І.Д., Резнік Є.К., Манічева Н.В., Шаповалов І.П. КОМП'ЮТЕРНА ДІАГНОСТИКА В БІОМЕДИЧНІЙ ІНЖЕНЕРІЇ	405
92.	Клімов О.П., Ісаков О.В., Мартиненко М.М. МОДИФІКАЦІЇ ТАНКА LEOPARD ТА ЇХ ОСОБЛИВОСТІ	410
93.	Комлева Н.О., Дюдін В.Д. ОНЛАЙН-ПЛАТФОРМА ДЛЯ ОСВОЄННЯ ФІНАНСОВОЇ ГРАМОТНОСТІ	418
94.	Комлева Н.О., Зощенко М.О. ОНЛАЙН-ПЛАТФОРМА ДЛЯ ОРГАНІЗАЦІЇ КУРСІВ ПІДВИЩЕННЯ КВАЛІФІКАЦІЇ	422
95.	Корчак М.М., Лісевич О.В. ОПТИМІЗАЦІЯ ДИСКОВОГО РОБОЧОГО ОРГАНУ ДЛЯ ЯКІСНОГО РОЗРІЗАННЯ ГРУБИХ СТЕБЛОВИХ ЗАЛИШКІВ	425
96.	Литвиненко О.І., Шишацький А.В., Походенко Б.О., Дроздик Є.В., Канішов В.І. МЕТОД ПАРАМЕТРИЧНОЇ ОПТИМІЗАЦІЇ НА ОСНОВІ УДОСКОНАЛЕНОГО АЛГОРИТМУ ЗГРАЇ ВОВКІВ	430

## **MATHEMATICAL MODELING OF REED VALVE OPERATION IN ENGINES WITH PERIODIC WORKFLOW**

**Khrulev Alexander,**

Ph.D., Senior Researcher, forensic expert  
International Motor Bureau

The intake reed valve is a common design element of various engines and units (Fig. 1). This type of the check valve is used mainly in 2-stroke gasoline engines with crank-chamber purging [1], where this type of valve is quite well developed both experimentally [2] and theoretically [3]. In addition, reed valves are widely used in air compressors [4], and a significant number of works have also been devoted to their research [5]. In addition, reed valves are used in elements of hydraulic systems [6] and also in pulse jet engines [7].

Interest in modeling a reed valve operation is associated with three reasons. On the one hand, it is necessary to correctly select the dimensions and parameters of the valve when designing an object (compressor or engine), and then the valve operation can be studied separately from the object. On the other hand, the valve model must be integrated into a complete mathematical model of an object of varying complexity, since the reed valve is an integral element of the intake system. Then the operation of the valve is considered as part of the operation of the entire object.

Finally, it should be noted that the reed valve operates under conditions of significant dynamic loads. As a result, fatigue failure to the valve is possible (Fig. 1a, b, c), and the most serious damage occurs with additional temperature exposure (Fig. 1d). In this case, the task of modeling the valve operation can be carried out in order to determine or clarify the cause of destruction.

When creating the valve mathematical models, several fundamentally different approaches are used. Thus, in some works [8] the problem of static loading of a valve petal from a constant pressure drop is considered. In this case, the valve petal deflection is assumed to be quasi-static (quasi-stationary) and is determined only by the pressure drop. However, the vast majority of studies address dynamic problems of valve motion.

Based on this, the purpose of the study is to evaluate the effectiveness of using simple models of a reed valve installed in the intake channel adjacent to the control volume (working cylinder or combustion chamber), as a component of 0-dimensional closed thermodynamic models of the engine working cycle or as an independent model when investigating the failure causes.

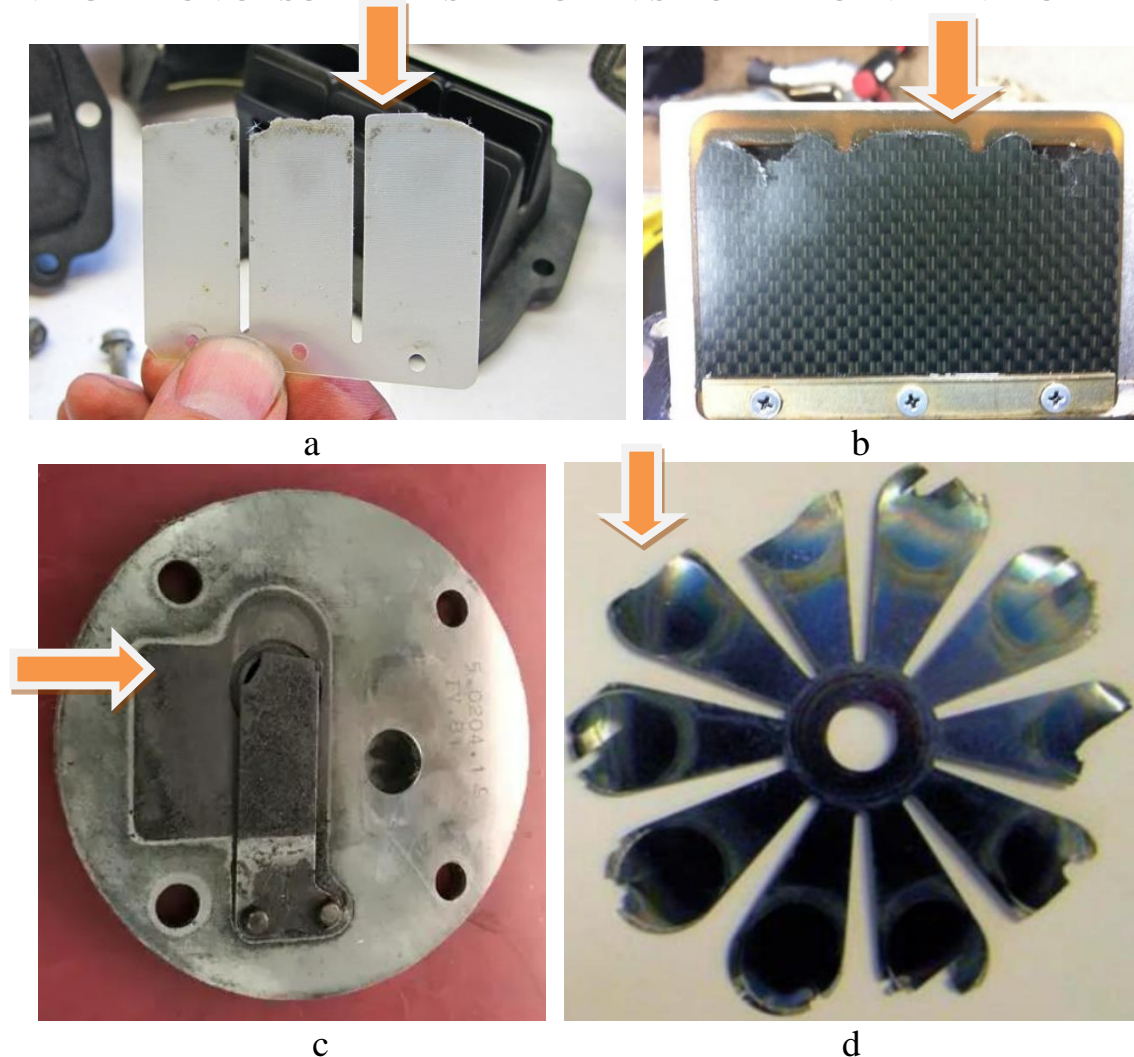


Figure 1. Reed valves and their damage in operation: cold fatigue cracking of metal (a) and plastic (b) valve petals in two-stroke gasoline engines and compressors (c), damage as a result of complex thermo-mechanical effects in small-sized pulse jet engines (d)

To achieve the goal above, it seems necessary to do the following tasks:

- consider the engine operating cycle model and identify the influence of the intake valve on the operating process,
- determine air flow rate as a parameter by which valve models can be compared,
- develop the valve models; perform mathematical modeling of the valve petal motion,
- based on the data obtained, conduct a comparative analysis of the accuracy and reliability of the models in relation to the type of engine under consideration, as well as evaluate the limits of their applicability.

In the general case, an engine with periodic workflow represents a certain control volume (cylinder, combustion chamber), to which the intake and exhaust systems with the corresponding channels (pipes) are connected [9]. In this case, the inlet pipe ends with a reed valve, which allows air into the volume in the forward direction (with a positive pressure drop between the environment and the volume), but closes with a negative one.

Air flow rate is a parameter that integrally characterizes the process of air flow through the reed valve under consideration [10]. If we do not take into account the dynamic pressure at the inlet (in some types of engines with periodic workflow it is not present, i.e. equal to ambient pressure), then for the dimensionless instantaneous air flow rate we can obtain the formula:

$$\frac{dm_e}{dt} = \frac{d\bar{m}_e/d\bar{t}}{\bar{\rho}_0 \bar{a}_0 F_a} = \frac{1}{\sqrt{1 + \xi_z}} \Phi p^{\frac{1}{k_0}} \sqrt{\frac{2}{\gamma_0 - 1} \left(1 - p^{\frac{\gamma_0}{\gamma_0 - 1}}\right)}. \quad (1)$$

where  $\Phi = F_e/F_a = (D_e/D_a)^2$  is dimensionless parameter;  $D_e, D_a$  are diameters of the input channel and resonance pipe of an engine with periodic workflow;  $\xi_z$  is coefficient of hydraulic resistance [11] of the pipe and valve (valve system);  $\gamma_0 = 1,4$  is heat capacity ratio;  $p = \bar{p}/\bar{p}_0$  is dimensionless pressure in the control volume;  $\bar{a}_0$  is air speed of sound;  $\bar{p}_0, \bar{\rho}_0$  are ambient pressure and density;  $t = \bar{t}\bar{a}_0/L$  is the dimensionless process time,  $L$  is the characteristic size of the engine (the overbar indicates dimensional values).

For a quasi-stationary setting, the valve petal lift is completely determined by only two factors: the distributed force (pressure drop  $\Delta p$ ) and the valve petal stiffness. If the valve petal is a beam rigidly fixed on one side, which is acted upon by a distributed force  $\bar{q}$  (Fig. 2a), then according to [11], the dependence of the lifting of the valve petal end on this force looks like this:

$$y = \frac{\bar{y}}{l} = 1,5 \frac{\Delta p}{S}, \quad (2)$$

where  $l$  is the length of the valve petal;  $\Delta p = \Delta \bar{p}/\bar{p}_0$  is the dimensionless pressure drop across the valve, and the dimensionless parameter  $S$  actually determines the rigidity of the valve petal:

$$S = \frac{\bar{E}}{\bar{p}_0} \left(\frac{\delta}{l}\right)^3. \quad (3)$$

where  $\bar{E}$  is the elastic modulus of the material;  $\delta$  is the valve petal thickness.

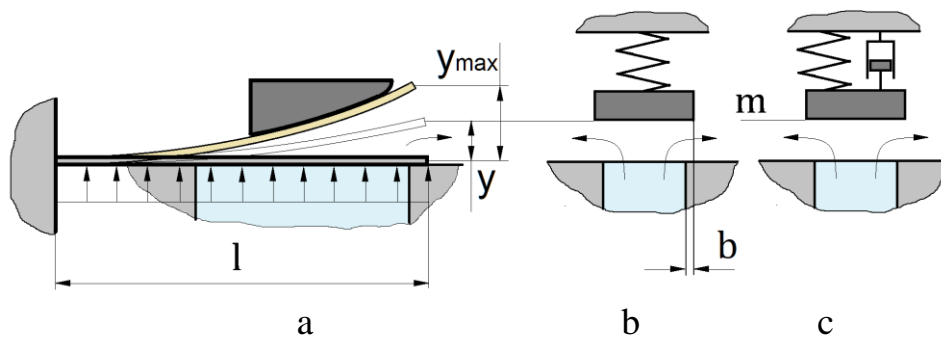


Figure 2. View of reed valve in the form of a beam with a fixed seal (a), in the form of a spring-loaded mass (b) with damping (c).

In general, the valve petal is affected by the forces of gravity, pressure and elasticity. Excluding the force of gravity, which is negligible compared to others, this allowed us to write the equation for valve reed motion in the form:

$$m \frac{d^2 \bar{y}}{d\bar{t}^2} = -K\bar{y} + \Delta \bar{p} A, \quad (4)$$

where  $K$  is the valve stiffness;  $A$  is valve petal area (to the 1st approximation, it can be equal to the area of the hole opened by the petal).

To solve equation (4), it is necessary to reduce its order. This was done by transforming it into a system of equations for the 1st order derivative of velocity (acceleration) and the 1st order derivative of valve lift (velocity):

$$\begin{cases} \theta \frac{du}{dt} = -\frac{2}{3} Sy + \Delta p \\ \lambda \frac{dy}{dt} = u \end{cases}, \quad (5)$$

where  $\theta = \gamma_0 \rho_M \lambda \left( \frac{\delta}{l} \right)$  is dynamic coefficient;  $\rho_M = \bar{\rho}_M / \bar{\rho}_0$  is dimensionless density of the valve blade material;  $\lambda = l/L$  is relative length of the valve petal.

System (5) was solved numerically with initial and boundary conditions. Initial conditions were:  $y = 0, u = 0$  at  $t = 0$ . Boundary conditions determine the rebound of the valve petal from the valve block during landing and from the stop plate at maximum lifting: if  $y < 0$ , then  $y = -\beta y, u = -\beta u$ , and if  $y > y_{max}$ , then  $y = 2y_{max} - \beta y, u = -\beta u$  is accepted.

The coefficient of recovery (COR) lies in the range of  $\beta = 0 - 1$ , which corresponds to the range from completely inelastic to completely elastic impact. The calculations assumed an analogy of the interaction of a steel ball with a steel plate, in which the value of the coefficient  $\beta$  is 0.4 [12].

In the calculations, other quantities included in the equations were taken equal  $\delta = 0.00025$  m,  $l = 0.025$  m,  $L = 0.80$  m,  $y_{max} = 0.2$ ,  $D_e = 0.035$  m,  $D_a = 0.04$  m, which approximately corresponds to some engines of the type under consideration [13].

The pressure drop across the valve was modeled by specifying pulsations (forced oscillations) of air pressure in the control volume according to a sinusoidal law. The oscillation frequency varied from  $f = Sh = 0.1-0.7$ . The amplitude of oscillations was assumed to be constant and equal to  $\Delta p = 0.3$ . The air flow rate was calculated based on the condition that 10 reed valves are installed in the valve block according to Fig.1d.

The results of calculating the valve petal lift using the quasi-stationary model are presented in Fig. 3a. For comparison, Fig. 3b shows the results of calculations of the valve petal lift using a dynamic model at the same frequency of forced oscillations.

As follows from the obtained curves, in dynamics, the valve petal has a rebound from the stop plate and from the valve block, which causes the air backflow after impact on the valve block.

When modeling at high frequencies, a dynamic lag was revealed both when opening and closing the valve petal with increasing process frequency (Fig. 4). There is also a significant increase in the amplitude of petal speed fluctuations and especially the speed at the moment the valve petal impacts the valve block (Fig. 4a), which can affect reliability and durability. With increasing frequency of forced oscillations, the difference between the models grows rapidly (Fig. 4b). In addition, with increasing frequency, the phase lag of the petal lift and air flow curves increases.

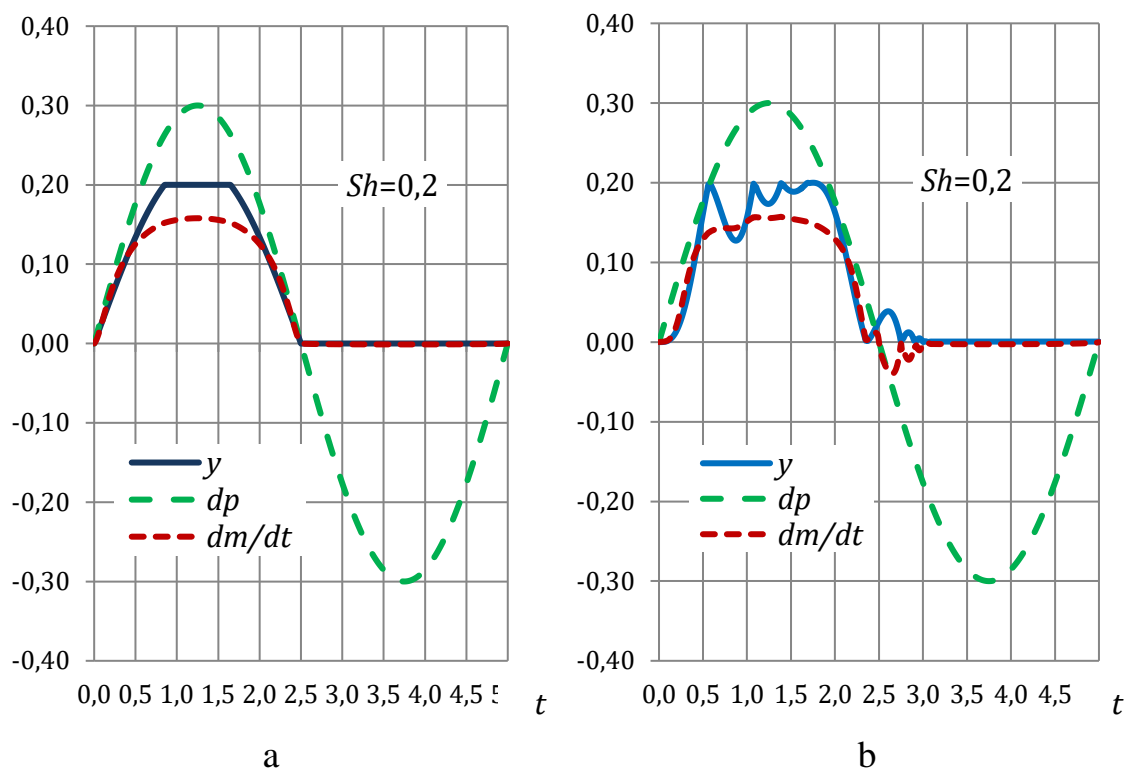


Figure 3. Comparison of the results of modeling a reed valve: a – quasi-stationary model; b – dynamic model

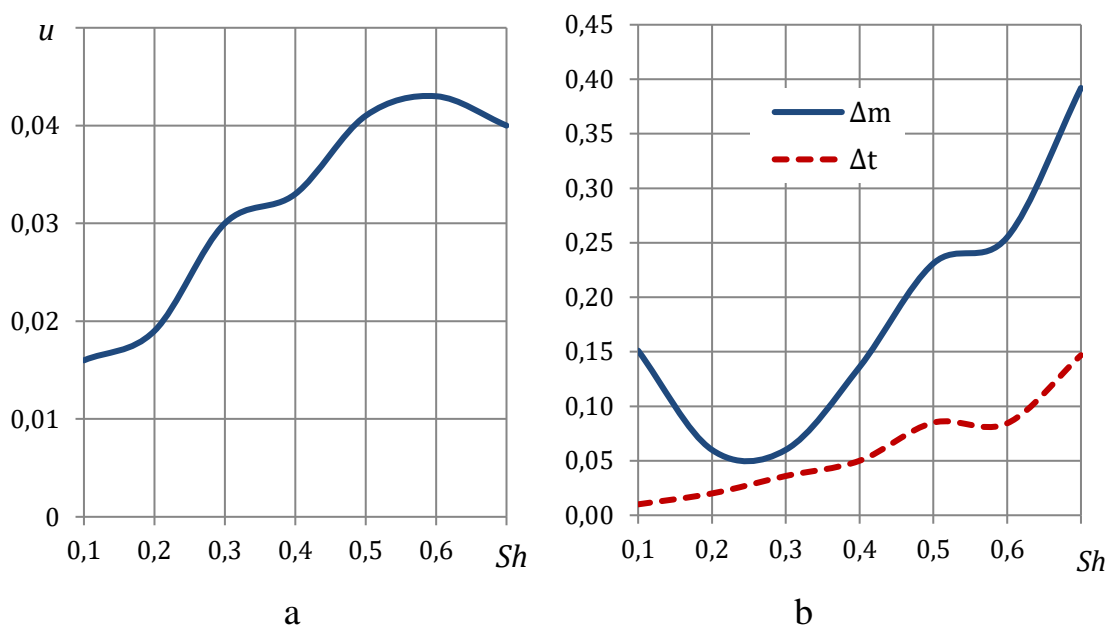


Figure 4. The resulting curves of parameters depending on the frequency of the process (Strouhal number): a – the speed of the valve petal at the moment of impact on the valve block; b – error of the quasi-stationary model in terms of air flow rate and oscillation phase lag

The found nature of the change in parameters leads to the fact that at frequencies with  $Sh$  below 0.1-0.15 the difference in air flow rate between models reaches 15%. Additionally, at  $Sh$  above 0.4-0.5 it exceeds 25% or more. In practice, this means that

the quasi-stationary model is not applicable in the indicated ranges - it does not take into account dynamic phenomena and simply gives an excessive error, overestimating the air flow rate. In this regard, it is important to determine the realistic frequency range corresponding to real engines.

As an example, we consider one of the known types of engines with a periodic workflow – a valved pulse jet engine. As follows from Table 1, the Strouhal number for this type of engine is quite tightly grouped around the value of 0.30. It is near this value that the difference in air flow rate for the reed valve models under consideration is minimal (according to Fig. 4b, in the range of the Strouhal number  $Sh = 0.2-0.3$  the difference is only 5-6%).

For 2-stroke gasoline internal combustion engines with crank-chamber purge [1, 3], there is a certain analogy to the working process of the reed valve with pulse jet engines, since the frequency values given in Table 1 approximately correspond to rotation speed in maximal modes. Then, with similar valve petal sizes, the operating range of rotation speeds will be located on the left side of the diagram (Fig. 4b), where the error of the quasi-stationary model is minimal or small.

It follows that the quasi-stationary reed valve model for these engines is quite applicable and can be used, at least at the preliminary stage of creating and debugging a general 0-dimensional thermodynamic model of the engine operating cycle.

### References

1. Blair G.P. The Basic Design of Two-Stroke Engines. Society of Automotive Engineers, Inc., Warrendale, 1993. 692 p.
2. Hamasaki K., Tanaka Y. Effect of reed valve configuration on the charging characteristics of a crankcase-compressed two-stroke engine. Kagoshima University Repository Content, 1991, Vol.33, pp. 13-22. Available at: <http://hdl.handle.net/10232/11522> [accessed 19.10.2023].
3. Westoff P., Servias J., Rowinski D. Evinrude Two-Stroke Reed FSI Modelling and Validation. Presentation. Converge CDF Software. UGM 2105. 52 p. Available at: [https://convergecdf.com/resources/reedFSIv3\\_distCVG.pdf](https://convergecdf.com/resources/reedFSIv3_distCVG.pdf) [accessed 19.10.2023].
4. Knutson A.L. Modeling and Experimental Validation of Disc and Reed Style Check Valves for Hydraulic Applications. A thesis submitted to the Faculty of the graduate school. In partial fulfillment of the requirements for the degree of master of science. University of Minnesota, 2016. 153 p.
5. Fornitz K. H. Numerical Modelling of a Suction Reed Valve from a Reciprocating Compressor using Fluid Structure Interaction. Master's Thesis in Process Engineering and Combustion Technology. PECT10-2-F18. Aalborg University, Esbjerg, 2018. 68 p.
6. Chaudhuri A. Static and Dynamic Deformations of a Reed Valve Immersed in Hydraulic Fluid. LA-UR-14-27139. Excerpt from the Proceedings of the 2014 COMSOL Conference in Boston, 2014. 3 p.
7. Khrulev A. Modeling of engine with periodic workflow using dimensionless similarity criteria and piston analogy method. World of scientific research. Issue 23:

Materials of the International Multidisciplinary Scientific Internet Conference, Ternopil, Opole, October 24-25, 2023, pp. 270-273.

8. Khrulev A., Saraieva I., Vorobiov O., Sokhin A. Evaluation of the possibility of using mathematical models for expert research of car engine damage. *Vehicle and electronics. Innovative technologies*, Vol. 21, 2022, pp. 79-86. DOI: <https://doi.org/10.30977/VEIT.2022.21.0.06>.

9. Khrulev, A. Analysis of pneumatic catapult launch system parameters, taking into account engine and UAV characteristics. *Advanced UAV*, 2023. 3 (1), pp. 10-24. Available at: <https://publish.mersin.edu.tr/index.php/uav/article/view/1045> [accessed 19.10.2023].

10. Khrulev A., Saraev O. Building a mathematical model of the destruction of a connecting rod-piston group in the car engine at hydraulic lock. *Eastern-European Journal of Enterprise Technologies*, 2022, 3/7 (117), pp. 40–49. DOI: <https://doi.org/10.15587/1729-4061.2022.259454>.

11 Idelchik IE. *Handbook of Hydraulic Resistance. Coefficients of Local Resistance and of Friction*. New York: Israel Program for Scientific Translations Ltd.; 1966. 517 p.

12. Hashemnia K. Experimental study of the effect of temperature on the coefficient of restitution of steel balls impact to some industrial metal sheets at elevated temperatures. *Powder Technology*, Vol. 368, 15 May 2020, pp. 170-177. DOI: <https://doi.org/10.1016/j.powtec.2020.04.053>.

13. Ahmadian S. *Computational Approach in Sizing of Pulsejet Engine*. Emirates University, 2014, Available at: [https://www.researchgate.net/publication/284511823\\_Computational\\_Approach\\_in\\_Sizing\\_of\\_Pulsejet\\_Engine](https://www.researchgate.net/publication/284511823_Computational_Approach_in_Sizing_of_Pulsejet_Engine). [accessed 19.08.2023].

14. Anand V., Jodele J., Zahn A., Geller A., Prisell E., Lyrsell O., Gutmark E. Revisiting the Argus pulsejet engine of V-1 buzz bombs: An experimental investigation of the first mass-produced pressure gain combustion device. *Experimental Thermal and Fluid Science*, 2019, Vol. 109, 109910. DOI: <https://doi.org/10.1016/j.expthermflusci.2019.109910>.

15. Litke P.J., Schauer F.R., Paxson D.E., Bradley R.P. and Hoke J.L. Assessment of the Performance of a Pulsejet and Comparison with a Pulsed-Detonation Engine. 43rd AIAA Aerospace Sciences Meeting and Exhibit, January 10-13, 2005, Reno, Nevada. 10 p.